



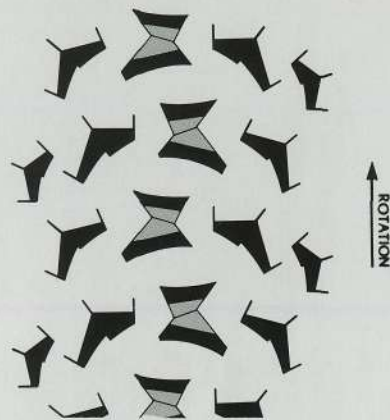
MOUNTAIN TIRES

No one designs mountain bike tires like Tom Ritchey. Every Ritchey tire is painstakingly thought out to provide maximum traction with minimum rolling resistance and minimum weight. Before a final design is reached, many field tests are made by Tom and his team riders to ensure performance they will want to ride on. Every tire is also manufactured with the highest quality and standards in the industry. This year brings two exciting additions to the mountain bike tire line. First, we're pleased to announce the introduction of the new MegaBite Z-Max. The Z-Max combines all of the latest refinements of Ritchey's Vector Force Analysis (VFA) with three full years of race-winning MegaBite experience. Once again, Ritchey sets a new standard in tread design technology with the super traction MegaBite Z-Max in both the 2.1" and 2.35" widths. The second addition to the line is our **new special limited edition "WCS" (World Champion Series)** low density rubber line of superlight tires. This series is available in each tire design in either standard black or special red, a softer, more puncture resistant compound. Ritchey tires have always been the lightest full-width tires, and with the new "WCS" series, the lightest just got lighter!

MEGABITE Z-MAX

The Z-Max is the newest in the evolution of MegaBite tires. Perfecting Vector Force Analysis, it takes off-road traction to the max!

◆ 26x2.1	660 grams	66 tpi	
◆ 26x2.35	700 grams	66 tpi	
◆ "WCS" 26x2.1 Kevlar	560 grams	127 tpi	Red compound avail.
◆ "WCS" 26x2.35 Kevlar	600 grams	127 tpi	Red compound avail.
◆ 24x2.0	600 grams	60 tpi	
◆ 20x2.0 (BMX)	400 grams	60 tpi	
◆ 20x1.75 (BMX)	460 grams	60 tpi	



↑ ROTATION

MEGABITE HARDDRIVE

The HardDrive uses a Vector Force Analysis tread with a more open knob pattern and a wider width. It's perfect for soft, loose, and rugged terrain. This is the tire that won the 1989 NORBA Worlds.

◆ 26x2.1	630 grams	60 tpi	
◆ 26x2.1 Kevlar	575 grams	60 tpi	
◆ "WCS" 26x2.1 Kevlar	530 grams	127 tpi	Red compound avail.
◆ 700x38c	470 grams	60 tpi	

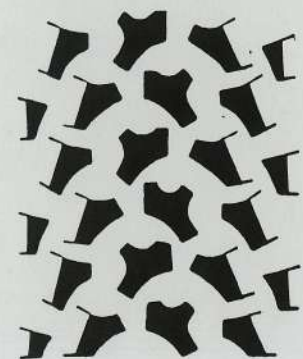


↑ ROTATION

MEGABITE OVERDRIVE

This is the first tire to ever use Vector Force Analysis in its tread design. The OverDrive is an excellent high-speed, low rolling resistance tire that offers great traction for fireroads and hard-packed surfaces.

◆ 26x2.0	650 grams	66 tpi	
◆ 26x2.0 Kevlar	600 grams	66 tpi	
◆ "WCS" 26x2.0 Kevlar	530 grams	127 tpi	Red compound avail.
◆ 700x38c	450 grams	66 tpi	
◆ "WCS" 700x38c Kevlar	380 grams	127 tpi	Red compound avail.



↑ ROTATION



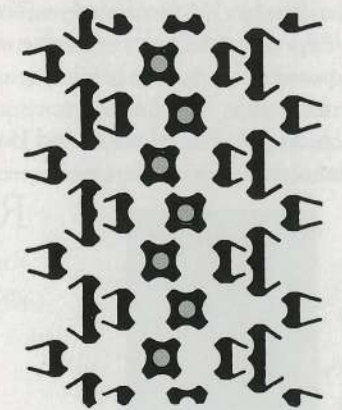
MOUNTAIN TIRES

FORCE RACING K

This two-time NORBA National Championship winning tread is still the leader in light weight, full-width, off-road tires. The Racing K is now available in the exclusive "WCS" series design, making the lightest mountain bike tire ever.

◆ 26x1.9 Kevlar	535 grams	66 tpi	
◆ "WCS" 26x1.9 Kevlar	465 grams	127 tpi	Red compound avail.

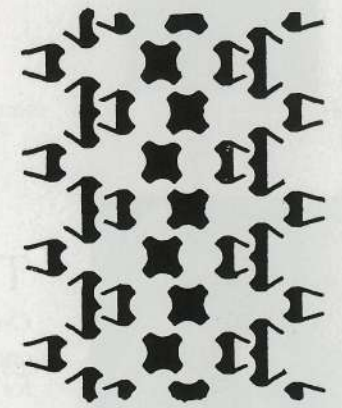
World's lightest MTB tire!



FORCE DURO

The Force Duro has been a longtime favorite of mountain bikers. The Duro provides the same performance of the Racing K with taller knobs to make a longer-wearing tire.

◆ 26x2.0	640 grams	66 tpi	
◆ 26x2.0 Kevlar	575 grams	66 tpi	
◆ "WCS" 26x2.0 Kevlar	510 grams	127 tpi	Red compound avail.

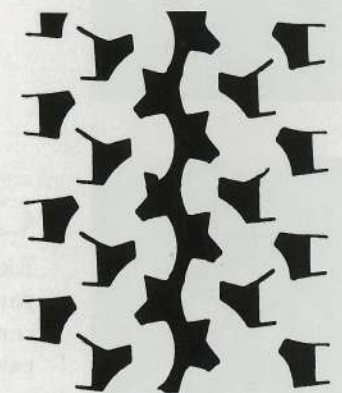


MOD QUAD

The Mod Quad uses Vector Force Analysis to combine the lower rolling resistance of the original Quad with the off-road performance of the MegaBites to make it the ultimate in multi-terrain tires.

◆ 26x2.0	650 grams	60 tpi	
----------	-----------	--------	--

↑ ROTATION



QUAD

The Quad is the most often copied multi-terrain tire on the market. This ever popular design sets the standard for all-terrain tire performance.

◆ 26x1.6	550 grams	60 tpi	
◆ 26x1.9	640 grams	66 tpi	
◆ "WCS" 26x1.9 Kevlar	560 grams	127 tpi	Red compound avail.

